

Earthquake Risk Survey

The earthquake risk exposure becomes significant concern for several countries located at earthquake prone area, such as Indonesia.

Several points which are observed during earthquake risk survey:

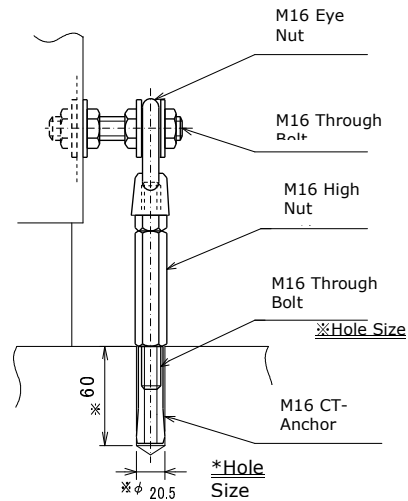
- Condition of area
- Building Construction
- Utility Equipment
- Production Equipment
- Storage system for finished goods and raw material
- Business flow

Assessment and evaluation from the above points will result in: the estimated loss, Probability Maximum Loss, The maximum scenario of the earthquake and Improvement Proposal.

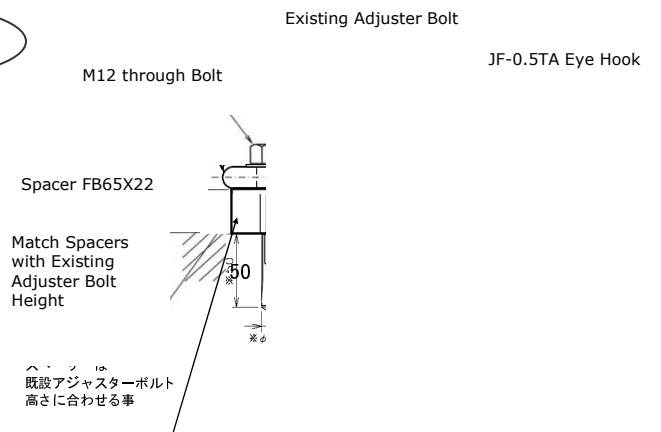
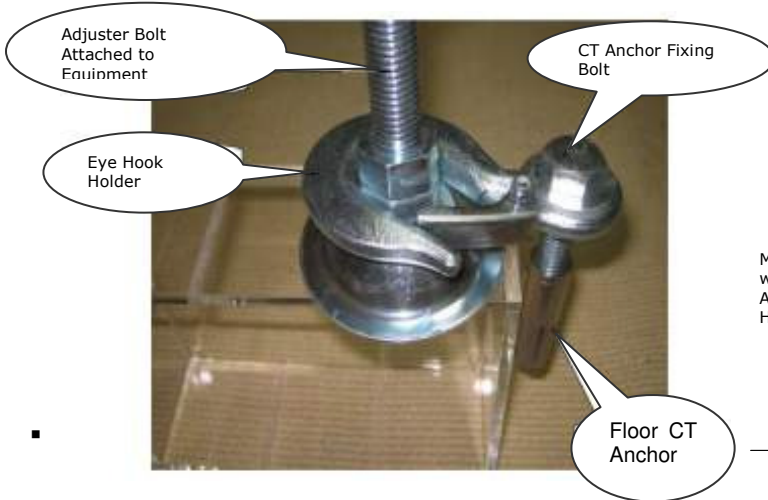
The risk survey will be done by our earthquake expert from Japan, NKSJ Risk Management, Inc.

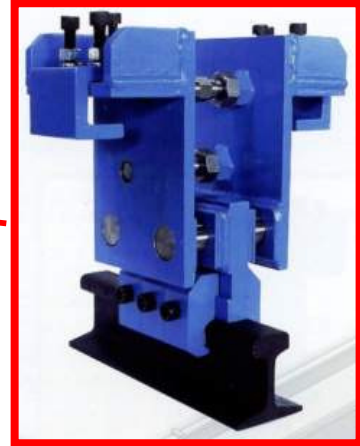
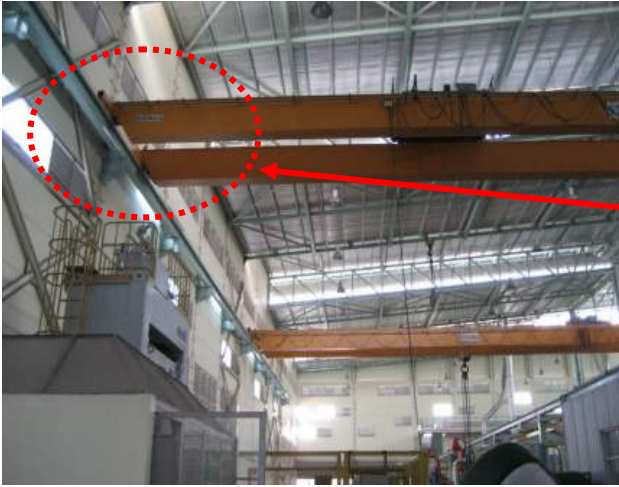
Below is sample of improvement proposal.

▪ **Example of anchoring general equipment**



▪ **Example of anchoring equipment that requires leveling**





Metal fittings are installed to prevent a wheel from flying off its axle; it can still grip the rail even when vibrated by an earthquake,